

# MOTH

[www.praimy.com](http://www.praimy.com)

[hello@praimy.com](mailto:hello@praimy.com)



## Eye Wrinkle Remover

USER MANUAL & WARRANTY INFORMATION



## Contents

- |    |       |                      |    |       |  |
|----|-------|----------------------|----|-------|--|
| 01 | ***** | Introduction         | 08 | ***** | Function Guide                             |
| 02 | ***** | Important            | 09 | ***** | How to charging                            |
| 03 | ***** | Important            | 10 | ***** | Cleaning the instrument                    |
| 04 | ***** | Product Mix          | 11 | ***** | Warranty terms and conditions, Environment |
| 05 | ***** | Technical Principles | 12 | ***** | Specifications, Disclaimer                 |
| 06 | ***** | Technical Principles |    |       |  |
| 07 | ***** | Function Guide       |    |       |  |

## Introduction

Radio-frequency Red Light Eye Beauty Instrument is a home-use eye beauty instrument designed to help you solve surrounding the eye various skin problems such as fine lines, dull-looking, oiliness, sagging, dehydration, etc. Radio-frequency is a non-invasive skin treating method with little side effects. It by means of electric heating, promotes collagen regeneration and effectively reduces fine lines, wrinkles. In the meantime, nano red LED light can promote skin metabolism, enhance cell activity and increase skin elasticity. The two technologies work together to rejuvenate skin and make you look younger.

Regularly using Radio-frequency Red Light Eye Beauty Instrument will help you stay young for longer!

**Note:** The Radio-frequency Red Light Eye Beauty Instrument has the function of heating. People who are not sensitive to heat must pay attention when using it.

## Important

Read this user manual carefully before you use the instrument and keep it for future reference.

### Danger

- Keep the charger and USB cable dry. Never immerse it into water.
- Do not charge this instrument in wet surroundings (e.g. near a filled bath, a running shower or near a filled swimming pool).
- Never throw the instrument into fire.

### Warning

- Only use the instrument in combination with the USB cable supplied when charging.
- Do not use the instrument, the attachment or the USB cable if it is damaged or broken to avoid injuries.
- If the USB cable is damaged, always have it replaced with one of the original type in order to avoid a hazard.
- Fully charge the instrument at least every 2 months to sustain battery lifetime.
- This instrument is not intended for use by persons younger than 12 years and persons with reduced physical, sensory or mental capabilities, or lack of experience and knowledge, unless they have been given supervision or instruction concerning use of the instrument by a person responsible for their safety.
- Women who are pregnant or lactating are not recommended to use this instrument.

## Important

### Caution

- Do not use the instrument for any other purpose than described in this manual.
- Charge, use and store the instrument at a temperature between 5°C/40°F and 35°C/95°F.
- Do not use the instrument if you are taking steroid based medication.
- Do not use this instrument if your skin is still recovering from a cosmetic procedure, such as a chemical or mechanical peeling, laser resurfacing, fractional laser treatment, or mesotherapy treatment or any other treatment with dermal fillers in the past two weeks.

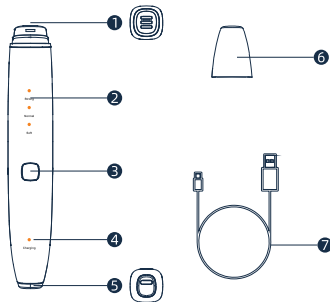
### General

- Regular cleaning of the instrument ensures optimal results and a longer life of the instrument. Do not use when sleeping or drowsy.

### Contraindications and other warnings

- Do not use the instrument on chapped skin, open wounds, or if you suffer from skin diseases or skin irritations, such as severe acne, sunburn, skin infection, etc.
- Do not use this instrument if you have a pacemaker, implanted instrument, or have a metal prosthesis.
- Do not use the instrument on any mucosal area (e.g. upper eyelid, eyeball, eyelid, inside nose, mouth, genital area) as it may cause local irritation.

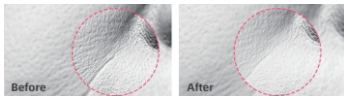
## Product Mix



- 1 Massage Probe
- 2 Functions Indicator
- 3 ON/OFF Button
- 4 Charging Indicator
- 5 Charging socket
- 6 Protective Cap
- 7 USB cable

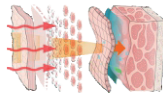
## Technical Principles

**Radio-frequency:** Radio-frequency beauty skin emits radio waves into the subcutaneous tissue through the Radio-frequency Red Light Eye Beauty Instrument, so that the natural resistance movement of the subcutaneous tissue generates heat energy. It uses the principle that the collagen fibers of the dermis layer will immediately contract at 55-70°C. Promote the two effects of collagen regeneration. At the same time collagen produces immediate contraction, it also stimulates the dermis to secrete more new collagen fibers to regenerate, thereby again supporting the skin's scaffold and increasing the thickness and density of the skin dermis. Fill wrinkles and improve slack.



## Technical Principles

**Red Light:** LED red light power uses 625nm±3nm high-efficiency luminescence wavelength, which can improve the microcirculation of the blood system and lymphatic system of the skin, and stimulate the mitochondrial activity in the cell. The specific wavelength of led red light can convert light energy into cell energy. And the free gene produced in the cell stimulates the fibroblast to produce collagen, activates the skin to accelerate blood circulation, and can improve wrinkles and moisturize from the inside of the skin.



## Function Guide

1. It is composed of three modes: Soft mode, Normal mode and Strong mode.



2. Three modes can be operated by a button.

3. Auto Shut-off: The appliance will automatically shut off after 10 minutes.

4. The instrument adopts intelligent sensor design. After selecting the appropriate mode according to individual needs, the massage probe fully contacts the skin before the instrument can start working.

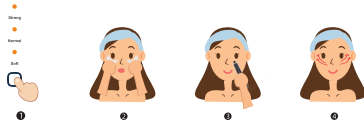
**Warning:** The radio waves generated by radio-frequency will continue to heat the dermis layer of the skin. Please continue to move the device while the massage probe is attached to the skin. Do not stay in the same area of the skin to avoid burns.

**NOTE:** The instrument maybe keep working if there is gel on the massage probe even without any skin contact, make it clean, then it will stop running.

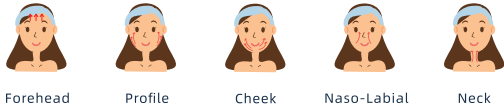
## Function Guide

Step 1: Press the on/off button to choose the mode that suits you.

Step 2: Apply gel to the surface of your skin, then touch the skin with a massage probe and move the massage.

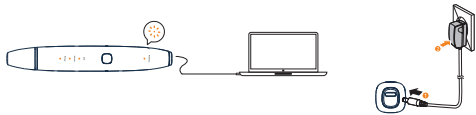


You can also use it to massage other parts:



## How to charging

1. Connect the computer to charge with a USB cable: Turn on the computer, connect the USB charging cable to the computer charging socket, and connect the Type-C end of the charging cable to the charging slot of the instrument to start charging.
2. Charge with adapter: Connect the USB charging cable to the adapter socket, and connect the Type-C end of the charging cable to the charging slot of the instrument to start charging. Adapter specifications: 5V = 1A
3. The indicator flashes when charging, and the indicator stays on when fully charged.



**CAUTION:** Before charging, make sure the charging port and charger are free from water. Do NOT use your instrument while charging, and do NOT charge for more than 24 hours. Never use the instrument if it is damaged.

## Cleaning the instrument

### Notes:

- Make sure the instrument is switched off before you start cleaning.
- Make sure the instrument is unplugged when you clean it. Only wipe the instrument with a dry cloth.
- Never use scouring pads, abrasive cleaning agents or aggressive liquids such as alcohol or acetone to clean the instrument.
- Clean the instrument and the massage probe thoroughly after each use to ensure optimum performance.
- Never rinse the whole instrument under water.
- Make sure all parts are dry before you reconnect to the adapter.



## Warranty terms and conditions

### 1-YEAR LIMITED WARRANTY

This instrument for a period of ONE (1) YEARS after the original date of purchase, against defects due to faulty workmanship or materials. If you discover a defect and notify us during the warranty period, we will, at its discretion, maintenance the instrument free of charge. The warranty covers working parts that affect the instrument's function. It does NOT cover purely cosmetic deterioration caused by fair wear and tear or damage caused by accident, misuse or neglect. Any attempt to open or disassemble the instrument (or its accessories) will void the warranty. For any warranty claim, reasonable evidence must be provided that the date of the claim is within the warranty period. For this reason, please keep your original purchase receipt for the duration of the warranty period.

### Environment

Do not throw away the instrument with the normal household waste at the end of its life, but hand it in and official collection point for recycling. By doing this, you help to preserve the environment.



## Specifications

MATERIALS: ABS+Zine-alloy

SIZE: 173\*27.3\*26.2 mm

WEIGHT: 98 g

BATTERY: Li-ion 600 mAh 3.7 V

CHARGING: 3 hours

USAGE: up to 60 min

STANDBY: 60 days

INTERFACE: 1-button

### Disclaimer

Users of this instrument do so at their own risk. Neither we nor its retailers assume any responsibility or liability for any injuries or damages, physical or otherwise, resulting, directly or indirectly, from the use of this instrument. Further, we reserves the right to revise this publication and to make changes from time to time in the contents thereof without obligation to notify any person of such revision or changes.

Please contact us for more comprehensive information, including user guide update, customer comments, frequently asked questions, etc.